

Breakdown of the principal themes and motives of the J.S. Bach Allemande  
as used in Fantasy on the Allemande of the Partita (published by Falls House Press)  
by Peter Bacchus

**1 - Main Theme (m. 1)**



a) descending bass:



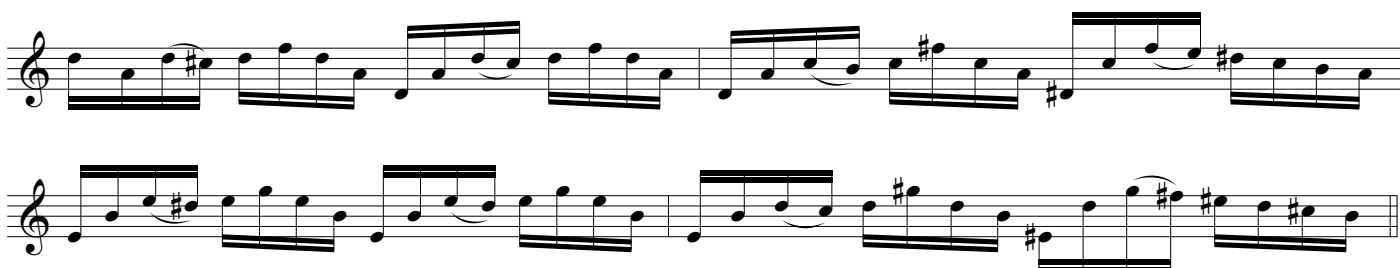
b) major to dominant to V of iv, extension of dominant:



c) modulating up a P5th:



d) modulating up a M2nd:



e) minor to V of iv, modulation to iv:



Breakdown of the principal themes and motives of the J.S. Bach Allemande  
as used in Fantasy on the Allemande by Peter Bacchus

2

f) minor to dominant, major to dominant:

Musical notation for section f) showing a sequence of notes with various accidentals and phrasing. It consists of three staves of music in treble clef, 3/4 time. The first staff contains a series of eighth and sixteenth notes with a sharp sign. The second staff continues with similar rhythmic patterns and includes a sharp sign. The third staff features a series of quarter notes with a sharp sign.

**2 - Secondary Theme (m. 2)**

Musical notation for the Secondary Theme (m. 2). It consists of a single staff of music in treble clef, 3/4 time, showing a sequence of eighth and sixteenth notes with a sharp sign.

a) ornamented:

Musical notation for section a) showing an ornamented version of the theme. It consists of a single staff of music in treble clef, 3/4 time, featuring a series of eighth and sixteenth notes with a sharp sign and a final flourish.

b) modulatory:

Musical notation for section b) showing a modulatory version of the theme. It consists of two staves of music in treble clef, 3/4 time, featuring a series of eighth and sixteenth notes with various accidentals and phrasing.

**3 - Secondary Theme (m. 3)**

Musical notation for the Secondary Theme (m. 3). It consists of a single staff of music in treble clef, 3/4 time, showing a sequence of eighth and sixteenth notes with a sharp sign.

c) modulatory to iv:

Musical notation for section c) showing a modulatory version of the theme. It consists of a single staff of music in treble clef, 3/4 time, featuring a series of eighth and sixteenth notes with various accidentals and phrasing.

b) modulate up P4th:

Musical notation for section b) showing a modulatory version of the theme. It consists of a single staff of music in treble clef, 3/4 time, featuring a series of eighth and sixteenth notes with various accidentals and phrasing.

c) modulatory to iv:

Two staves of musical notation in treble clef. The first staff contains a sequence of eighth and sixteenth notes with various accidentals (sharps, flats, naturals). The second staff continues this sequence with similar rhythmic and melodic patterns, including some beamed sixteenth notes.

#### 4 - Alternatives for extending the cadenza section at end of 1st part

Four staves of musical notation. The first staff is labeled "(original)". The second staff is labeled "(Fantasy on the Allemande)". The third staff is labeled "(alternative #1)" and ends with three flats (b, b, b). The fourth staff is labeled "(alternative #2)" and features a more complex, rhythmic pattern with many beamed sixteenth notes.

Three staves of musical notation. The first staff is labeled "(original)". The second staff is labeled "(Fantasy on the Allemande)". The third staff is labeled "(alternative #1)". The fourth staff is labeled "(alternative #2)" and features a complex, rhythmic pattern with many beamed sixteenth notes.

Two staves of musical notation. The first staff is labeled "(original)". The second staff is labeled "(Fantasy on the Allemande)" and features a complex, rhythmic pattern with many beamed sixteenth notes.

**Breakdown of the principal themes and motives of the J.S. Bach Allemande  
as used in Fantasy on the Allemande by Peter Bacchus**

4

*(original)*

*(alternative #2)*

Performance suggestions and corrections (reflecting the composer's recorded version on You Tube) -

**m.1 - suggested ornament on e natural 8th note at end of 1st phrase:**

**m.2 - suggested arpeggiated ornamentation to go from g-sharp to high d:**

**m.5 - 2nd beat, play as original:**

**m. 47 - insert the indicated notes after the 8th quarter note beat:**

**m. 73 - indicated e sharp is f sharp**